

Aids to computing and navigation and front matter

Thomas Price

August 24, 2004

Contents

1	Interpreting Expressions	2
2	Compute Menu and Toolbar	2
2.1	Shortcuts	2
2.2	Evaluate	2
2.3	Sorting	2
2.4	Solving	3
3	Problems	3
4	List of Figures	3

List of Figures

1	My First Plot	3
2	My Second Plot	4
3	My Last Plot	4

Lesson 7: Aids to computing and navigation and front matter

Project 7:

Instructions: Create a file containing **only** the exercises below and their solutions. You do not need to include the examples. Include the section headings that contain exercises. Include all Front Matter. Submit .pdf a version of your file to teprice@uakron.edu. The name of your file should be of the form **yourlastname07.pdf**. All calculations should be done using the CAS in SWP.

1 Interpreting Expressions

Example 1 *Removing ambiguities using Interpret:*

1. $1/3x + 4$
2. $\sin x/y$
3. $\int xy$

Use parentheses

Exercise 2 *Remove any ambiguities using interpret on four expressions of your choice. You should number your choices as I have.*

2 Compute Menu and Toolbar

2.1 Shortcuts

Example 3 *Using Shortcuts:*

1. Evaluate (Ctrl+E) $5 + 6$
2. Evaluate in place (Ctrl+Shift+E) $5 + 6$
3. Evaluate numerically $\sin 6$

Exercise 4 *Review the list of keyboard shortcuts by choosing Help+Search, then type keyboard or shortcuts, and finally select Keyboard Shortcuts from the list. Demonstrate your understanding of these shortcuts by presenting four examples in a list as above.*

2.2 Evaluate

Example 5 $2x + 3x = 1 + 4$

Example 6 *We can evaluate part of an expression: $3x - 6x + 2y + 3 + 7y$*

Example 7

$$[2x - 1]_1^2$$

or

$$2x|_1^2$$

$$|-2|$$

2.3 Sorting

Example 8 $3x - 6x + 2y + 3 + 7y$

2.4 Solving

Example 9 Solve exact: $2x + 3x = 1 + 4$

Example 10 Solve exact: $2x + 3x < 1 + 4$

Example 11 Solve exact: $2x + 3x \leq 1 + 4$

Exercise 12 Use the solve commands to find solutions to

1.

$$\begin{bmatrix} 3 & -1 \\ 2 & 6 \end{bmatrix} \begin{bmatrix} x \\ y \end{bmatrix} = \begin{bmatrix} 3 \\ 7 \end{bmatrix}$$

2.

$$\begin{bmatrix} 3x - y = 3 \\ 2x + 6y = 7 \end{bmatrix}$$

3 Problems

1. Error handling

4 List of Figures

x^2

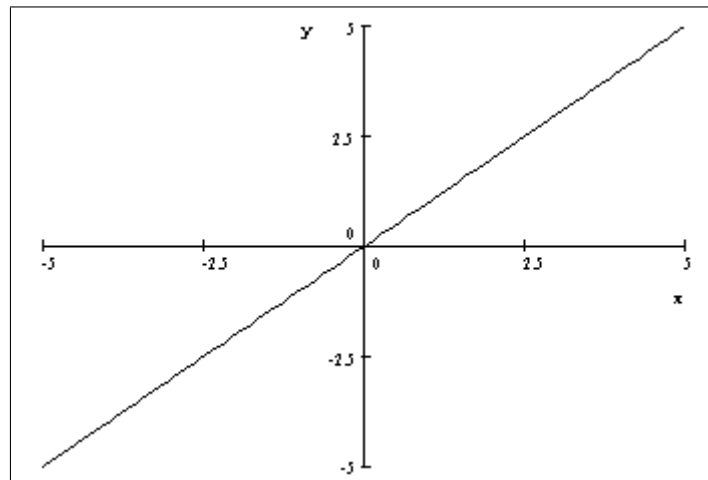


Figure 1: My First Plot

$x + y^2$

Exercise 13 Create three tables. Your submitted document should include a list of tables.

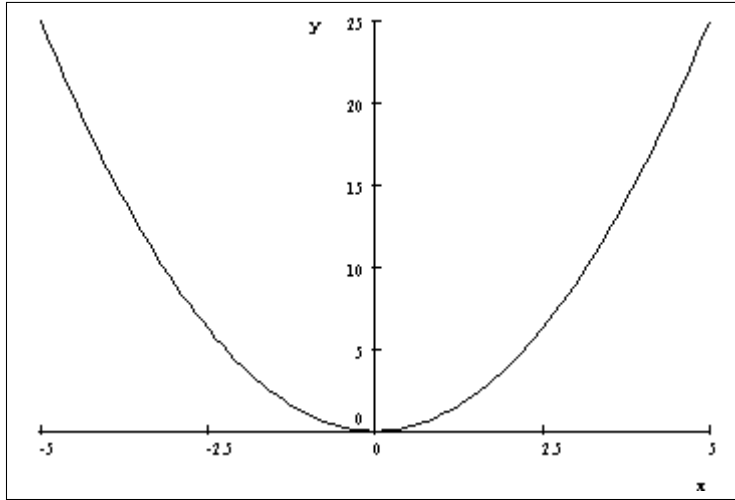


Figure 2: My Second Plot

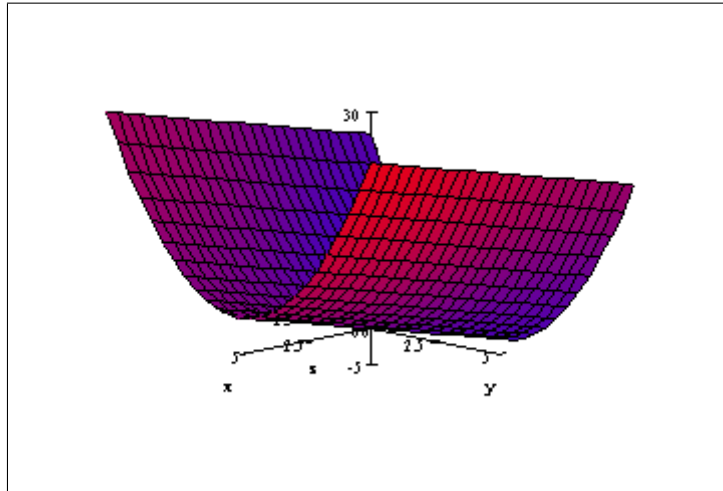


Figure 3: My Last Plot

Head	Head	Head
entry	entry	entry
entry	entry	entry
entry	entry	entry

Table 1: Table Caption