

3. The graph of a function f is shown in Figure 1. Which graph is an *antiderivative* of f ? Circle one: (a) (b) (c)

5 pts

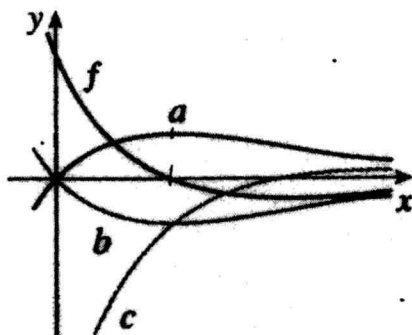


Figure 1: Find the *antiderivative* of f .

4. The graph of a function f' is shown in Figure 2. At the bottom of the page, sketch the graph of f if f is continuous, and $f(0) = -1$. Show the scale.

6 pts

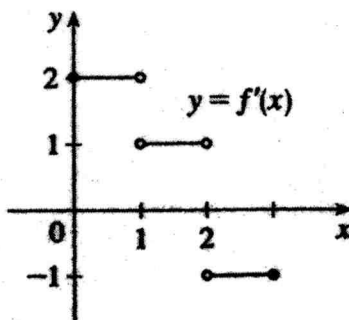


Figure 2: Graph of f' .

